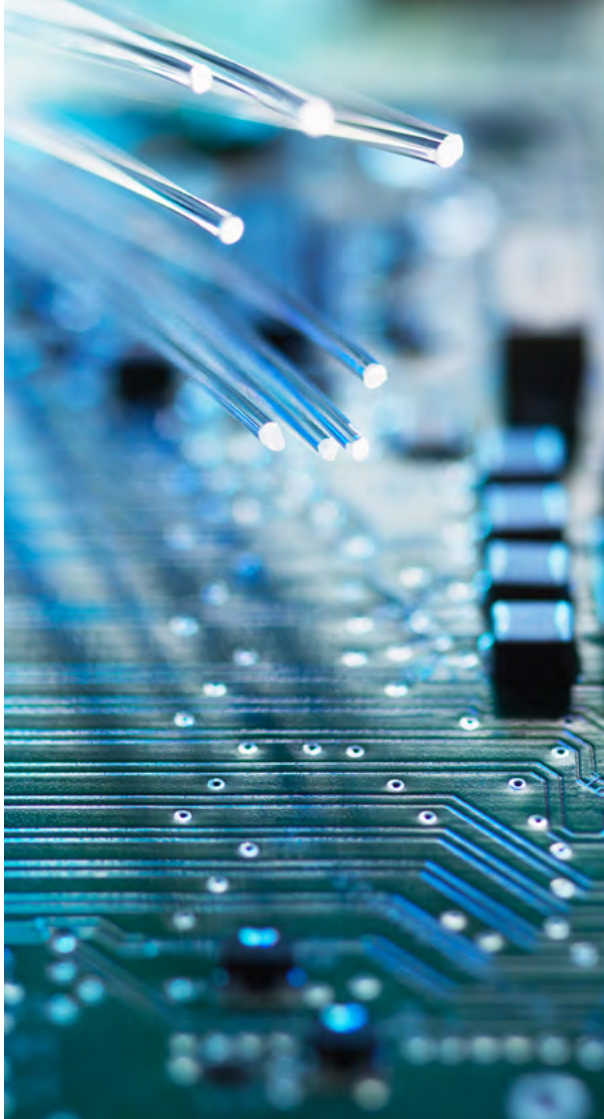


SAP Business ByDesign

# Turn growth potential into real results with SAP Business ByDesign

**SAP**<sup>®</sup>Business  
ByDesign



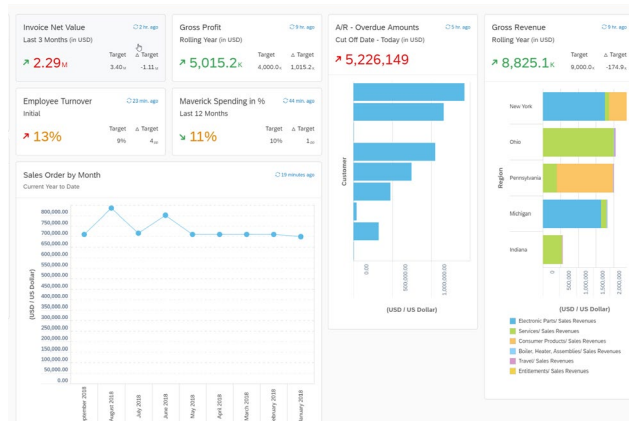


# Keep your business growing

SAP Business ByDesign gives fast-growing businesses the platform to turn growth potential into real results. This cloud-based ERP solution connects every function across your company to time-tested best practices and in-depth analytics. You'll get the foundation to scale and compete without the complexity and cost, so you can **grow your business your way**.

SAP Business ByDesign has everything a fast-growing business needs—an end-to-end solution, powered by proven SAP business processes and delivered quickly in an average implementation time of 8-12 weeks. A proven track-record of ongoing investment, innovation and delivery in the cloud.

Built to scale— this dynamic, configurable solution will drive growth today and keep growing with your business while you get full transparency into every aspect of your operations.



# Unify all core functions in an end-to-end business suite

SAP Business ByDesign delivers pre-built processes for everything from finance and sales to product management and purchasing on a single, unified solution, so you can put 40 years of SAP business process experience to work for your organization and focus on what you do best.

A natively mobile, cloud-based solution with an easy-to-use user experience that fits the way your employees want to work. Every part of the web-based solution is responsive—adapting to whatever mobile devices employees use to get their work done—and we offer targeted apps designed specifically for day-to-day tasks like time and expense reporting, project management and analytics.

Have a clear understanding of what you're paying with SAP Business ByDesign knowing what your costs are going to be for the duration of your contract and building your budget accordingly.

No surprises and no extra costs.



# Built to Grow with your Company

With customers in more than 100 countries and globalization and translation toolkits built on local best practices, SAP Business ByDesign provides the agility to adapt to tax requirements, languages, and currencies for quick entry to new markets.

SAP Business ByDesign scales from 20 to 10,000 users and allows you to easily re-configure processes, so you can add more employees as business grows.

Connect yourself to the systems you use today and what you may need next, featuring APIs that allow quick connections to custom solutions you've built as well as pre-built integrations with Office 365, Concur, SAP Analytics Cloud and SAP SuccessFactors.

SAP Business ByDesign is extensible and adaptable to meet your business needs.

You'll keep data moving across your company even as your company grows and changes.



Quickly adapt how you work as business changes and always keep your business moving forward.

# Bring Transparency to the Business

Because SAP Business ByDesign builds analytics into every process, you can share and see data across functions and departments and arm your team with the more accurate, timely and complete insight they need to make informed, in-the-moment decisions.

Give users an easy, clear view of the metrics that matter for their specific roles, showing issues and opportunities that require attention right from their dashboards, so they can quickly see what needs to be done and take action.

SAP Business ByDesign features more than 500 standard reports, dozens of pre-built KPIs and Excel integration—all right out of the box—so you can bring transparency to the business immediately and give your team the tools they need to easily analyze and share data.

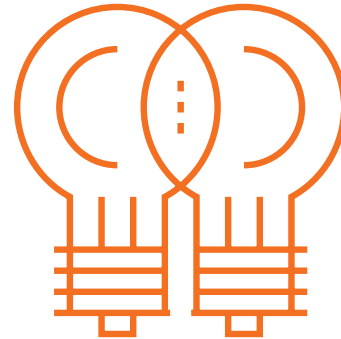


# Be always updated

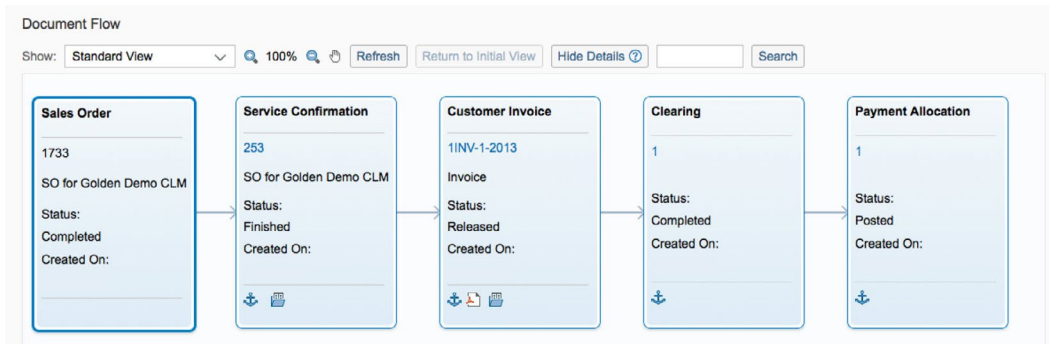
SAP Business ByDesign brings more than 10 years of experience running ERP in the cloud, so you can be confident you're getting a stable solution with a proven track record of delivering for organizations like yours.

By consistently delivering new features and processes—SAP Business ByDesign publishes a development roadmap so you know exactly what's coming next, and delivers quarterly product updates to get as it becomes available.

SAP Business ByDesign offers a range of configurations, extensions, adaptations and integrations that give you the flexibility to adapt and extend the solution to fit what you need now, while remaining in your standard service level agreement (SLA), so you can predict and manage pricing as well as get the latest updates with each quarterly release.



Put SAP latest technology innovation in your hands as quickly as possible.



## Summary

SAP Business ByDesign gives fast-growing businesses the platform to grow even faster. This cloud-based ERP solution is built from the ground up with flexible business processes based on best practices from thousands of companies, and it's designed to connect every person and part of your organization. Plus, embedded, in-depth analytics give you full transparency into your entire organization, so you can quickly act on opportunities to jumpstart growth. You'll have a powerful foundation to scale and compete with companies of all sizes—without the complexity and cost—so you can grow your business your way.

## Benefits

- End-to-end solution, powered by proven business processes and delivered in a simple, quick-to-implement package.
- Dynamic, configurable solution that will drive growth today and keep growing with your business.
- Analytics are a part of every process, so you can get full transparency into every aspect of your operation and the insight to make business-growing decisions.
- Backed by SAP and a proven track-record of ongoing investment, innovation and delivery in the cloud.

## Learn more

[SAP.com/ByDesign](https://www.sap.com/ByDesign).



